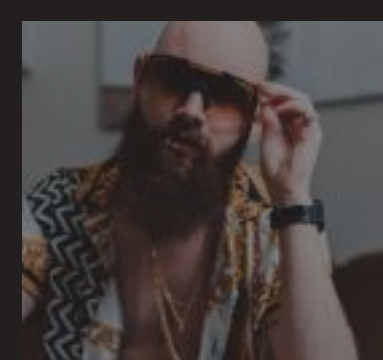
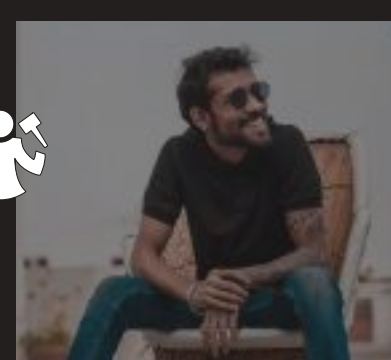
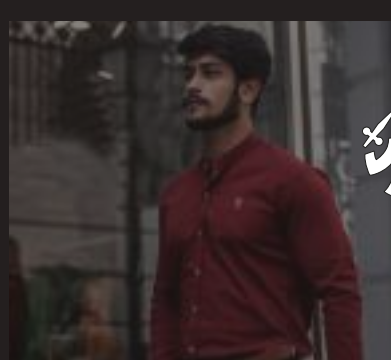
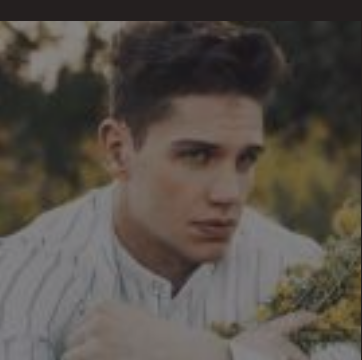
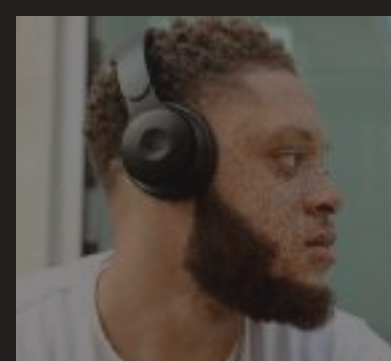
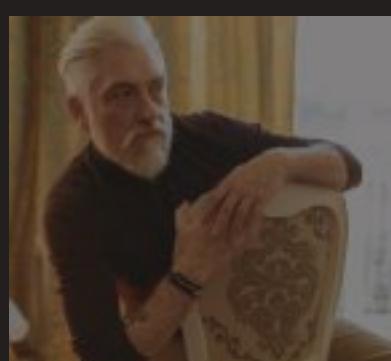
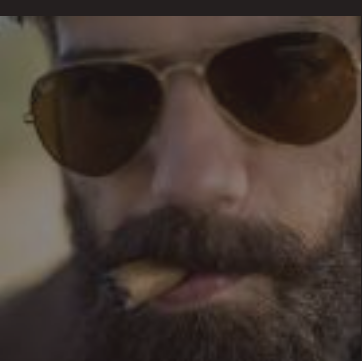
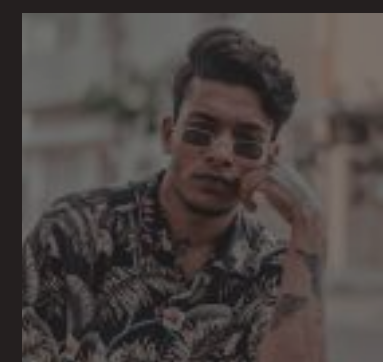
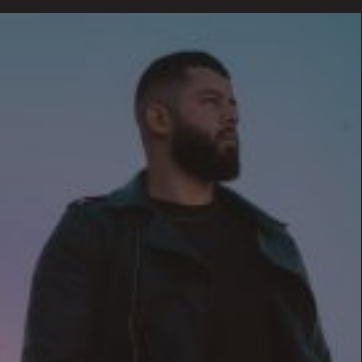
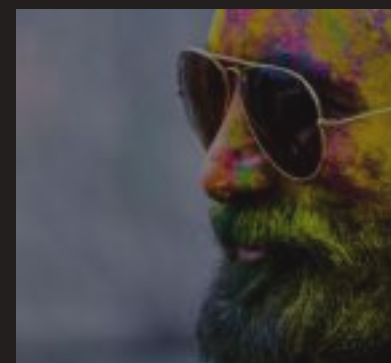
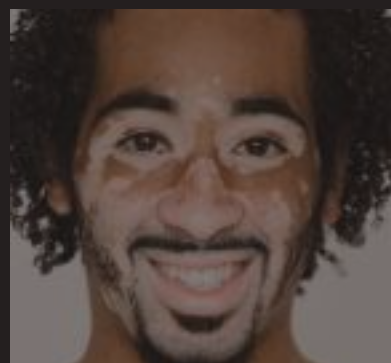
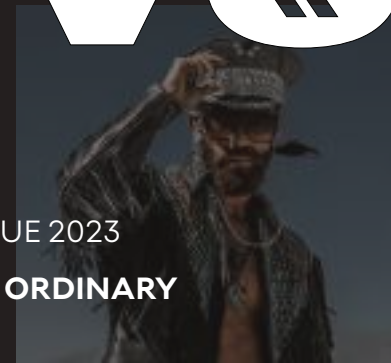
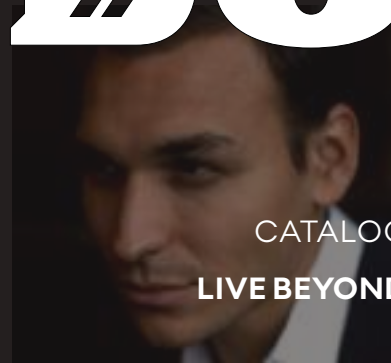
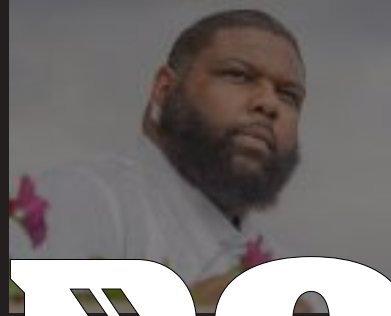
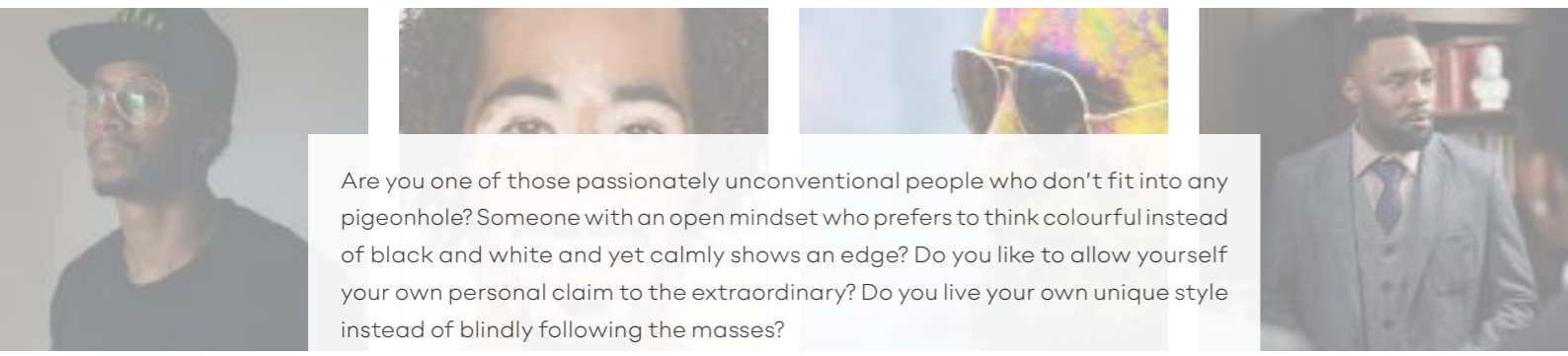


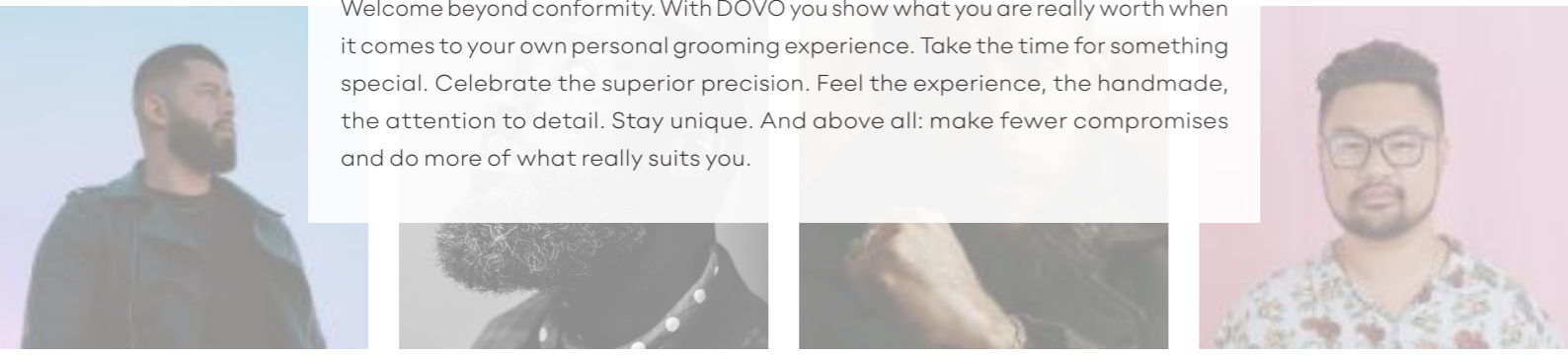
» DOVE «

CATALOGUE 2023
LIVE BEYOND ORDINARY

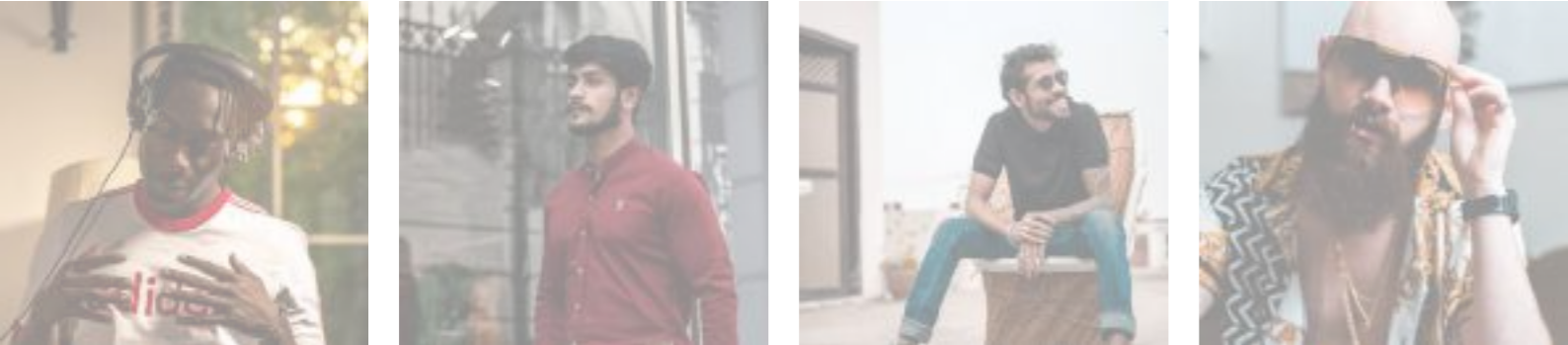
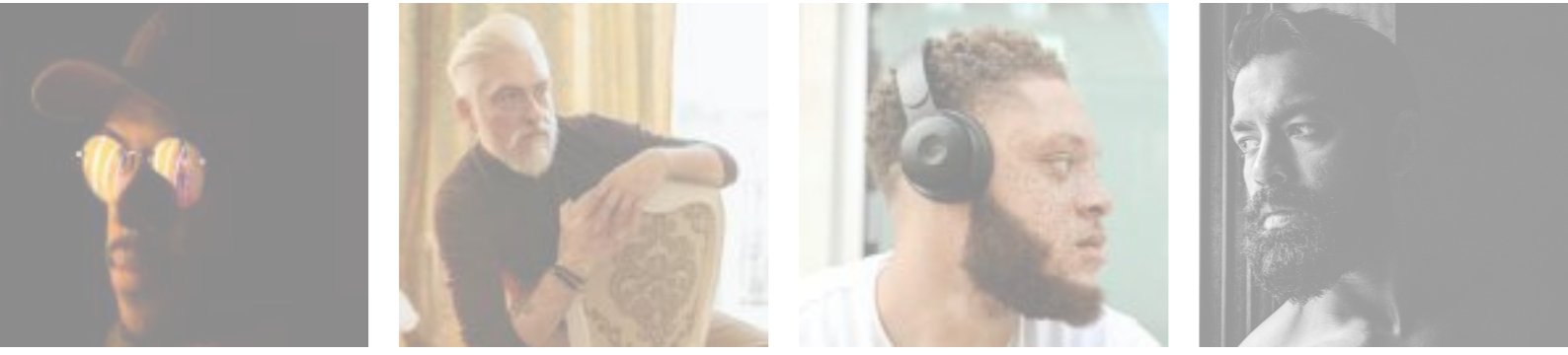




Are you one of those passionately unconventional people who don't fit into any pigeonhole? Someone with an open mindset who prefers to think colourful instead of black and white and yet calmly shows an edge? Do you like to allow yourself your own personal claim to the extraordinary? Do you live your own unique style instead of blindly following the masses?



Welcome beyond conformity. With DOVO you show what you are really worth when it comes to your own personal grooming experience. Take the time for something special. Celebrate the superior precision. Feel the experience, the handmade, the attention to detail. Stay unique. And above all: make fewer compromises and do more of what really suits you.



PAGE	CONTENT
4	WE MAKE HISTORY
7	STRAIGHT RAZORS
33	SHAVETTE™
39	SAFETY RAZORS
43	SHAVING ACCESSORIES
53	HARDWARE FOR HAIR AND BODY CARE
59	SETS AND ETUIS
65	OEM POSSIBILITIES
71	HISTORY AND OTHER TOPICS

DOVO Stahlwaren GmbH
 Solingen
 +49 (0) 212 230010
 info@dovo.com

WE MAKE HISTORY

YESTERDAY, TODAY, AND TOMORROW

VISIONS AND WONDERS

The year was 1906 when a man named Carl Dorp founded his razor factory in Wald near Solingen. He had previously had a figure with a hammer and a sword registered as his symbol: the hammer as a symbol for the razor forge and the sword as a sign of the manufacture and craftsmanship of his products. The merchant Carl Arthur Voos was also involved in the founding of the company. Dorp & Voos - DOVO for short - was born. A start-up, so to speak, with the vision of creating something extraordinary.

When the company was dissolved after the First World War, Carl Dorp initially remained as sole owner and finally handed over DOVO to Fritz Bracht, a trained razor grinder and manufacturer, in 1942. After the Trümmerjahre, his son-in-law took over the company and made DOVO part of the German economic miracle with high quality craftsmanship and a young, motivated workforce.



In the following decades, the steep rise continued. DOVO created dozens of jobs, expanded its product portfolio to include scissors, nippers, manicure cases and the like, and took over renowned competitors such as Tennis, Bismarck, Fontana and Merkur. Piece by piece and under a consistent, uncompromising quality maxim, the once small razor forge became an internationally active, flourishing company. And the name DOVO became a legendary brand of shaving culture worldwide.

OLD VALUES IN A NEW WORLD

Our long tradition as a manufactory and family business makes us proud and gives us our roots. But to-

day, as 100 years ago, the future needs visionary thinking and the courage to go our own way. At DOVO, we combine what makes us unique in order to remain true to our promise of quality in the 21st century. Experience and Zeitgeist. Passion for superior quality and openness to breaking with the usual. Manual work and digitalisation. Consistency and courageous entrepreneurial spirit.



HOME, ATTITUDE, CRAFTSMANSHIP

What remains unchanged is the commitment to the DOVO family, to our home region and to our employees. We still manufacture most of our products entirely in Germany. And all cutlery, such as razors, scissors or pliers, are still

made directly in Solingen, just as they were 100 years ago.

Here, too, we combine classic craftsmanship that has been handed down for generations with new, ultra-modern production techniques. The proportion of manual steps in the complex production process, which are often decisive for quality, is still well over 80%, while simpler work is partly carried out by robots.

The culture of wet shaving is experiencing a renaissance internationally today. Not only in barber shops, but also in the private sphere, more and more people are discovering the pleasure of this hedonistic ritual. In our product range, we therefore focus primarily on our unrivalled core competence and offer people with sophisticated desires a unique portfolio of high-quality razors and other steelware icons of modern shaving culture.



THE NIMBUS SOLINGEN

For centuries, Solingen has been considered the centre of the European cutlery industry. The iron ore deposits, the neighbouring forests as wood suppliers and the geographical proximity to the trading city of Cologne made the region around Solingen one of the world's most important suppliers of cutlery early on.

Geographically, Solingen is part of the Bergisches Land, a low mountain range region on the eastern side of the Rhine. The city belongs

to the Rhineland metropolitan region and is a member of the Rhineland Regional Association.

The origin of the name Solingen is still unclear, but it is certain that the name "Bergisches Land" is derived from the count's dynasty De Berge. There is evidence of blade-making in Solingen as early as 1200. The forested area provided the pioneers of blade making with optimal raw materials to pursue their craft.

The Counts of Berg were responsible for granting the manufactory privileges. Through skilful management, they established close contact with the trading city of Cologne. Before the term of origin Solingen became world famous, goods from the city were still traded under the name "Cologne swords". The arrival of South German and Austrian swordsmiths, who brought further valuable knowledge with them, made the region around Solingen the top international address for blade production.

In 1571, the knife makers of Solingen finally received their privileges and from then on had to mark their products with the inscription ME FECIT SOLINGEN, from the Latin for SOLINGEN MADE ME. However, not only swordsmiths but also the related craft of scissors makers were able to establish themselves in Solingen in the 16th century and received their privileges in 1794.

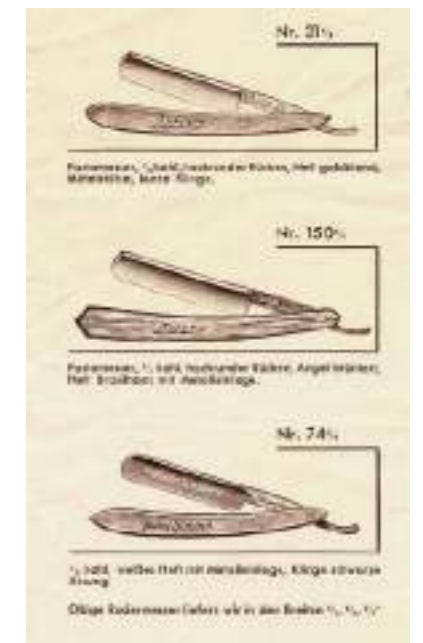
In Solingen, by the way, not only was production carried out, but also research. The constant refinement of blade craftsmanship, manufacturing technology and materials research has always been an integral part of the region. And as early as 1811, crucible casting steel was invented here.



The city of Solingen received a great honour in 1856: according to the Prussian city ordinance, the knife city received its own city rights. To this day, over 90% of the companies in the nationwide cutlery industry are based in Solingen. And it is still THE blade city of Germany.

But so much success and attention, often also arouses envy and criminal energy. Suppliers of low-quality counterfeits from all over the world frequently try to profit from the good reputation of the city and its traditional businesses.

But at the latest after the purchase, the difference between the fake and the original becomes obvious. And a DOVO razor can only be made by DOVO.



STRAIGHT RAZORS

HANDMADE PERFECTION
MEETS HEDONISM 3.0

A genuine DOVO razor is not just a tool. It is a living piece of unique shaving culture. A sign of personality. A touch of decadence in your hand. Made for doers. Perfect in form. A DOVO razor means the freedom to simply let go and enjoy the extraordinary moment. Your own personal savoir vivre. The true luxury of our time.

10 THE BISMARCK

12 THE BERGISCHER LÖWE

14 THE BARBAROSSA

16 THE BEST QUALITY

18 THE PRIMA

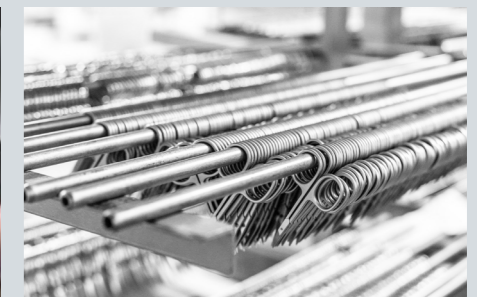
20 THE INOX

22 THE UNIQUE ONES

26 THE EDO

30 LIMITED EDITION: FACHARBEIT

WE DON'T MANUFACTURE
STRAIGHT RAZORS.



WE BRING THEM TO LIFE.



THE BISMARCK

RAZOR OF A CENTURY WITH IMPRESSIVE CHARACTER

Dare. Feel yourself. Let yourself be guided by your aspirations. The Bismarck is the essence of our more than 116 years of tradition and unbroken visionary mindset when it comes to shaving culture. Noble and self-confident, it stands by your side. With its perfectly balanced weight, it sits comfortably in your hand. It glides confidently over your skin. Astonishingly timeless. Beautiful to the point of weeping.



Ebony Wood

Article 10681082
 GTIN 4045284008287
 Blade 6/8", carbon, 1/1 full hollow, pointed spine, round point, gold-plated
 Handle ebony wood
 Size 162 x 27 x 11 mm



PERLA

Article 10681312
 GTIN 4045284008300
 Blade 6/8", carbon, 1/1 full hollow, pointed spine, round point, gold-plated
 Handle acrylic, perla white
 Size 162 x 28 x 12 mm



Black Duke

Article 10682082
 GTIN 4045284008812
 Blade 6/8", carbon, 1/1 full hollow, pointed spine, round point, black anodized
 Handle ebony wood
 Size 162 x 27 x 11 mm





THE BERGISCHER LÖWE

A RAZOR THAT GOES THROUGH FIRE FOR YOU – AT 1,000 DEGREES

Words don't create icons. They are created through true passion for the unique. No other razor stands for such power and grace without compromise. No other is such a loyal companion for you. Elasticity meets toughness. Strength meets grace. Agility meets precision. Its name is a tribute to the heraldic animal of our home region. Its reputation is unique worldwide. A reliable all-rounder at the highest level. And a revelation for your senses.



Horn 5/8"

Article 10581193
 GTIN 4045284007020
 Blade 5/8", carbon, 1/1 full hollow, pointed spine, round point, gold-plated
 Handle bovine horn



Horn 6/8"

Article 10681193
 GTIN 4045284008874
 Blade 6/8", carbon, 1/1 full hollow, pointed spine, round point, gold-plated
 Handle bovine horn



Ebony Wood

Article 10681083
 GTIN 4045284008881
 Blade 6/8", carbon, 1/1 full hollow, pointed spine, round point, gold-plated
 Handle ebony wood





THE BARBAROSSA

LEGENDARY STATUS SYMBOL WITH PRECISION AND DISTINCTION

Short blade. Distinct edge. Long tradition. For barbers and beard wearers, the Barbarossa is a coveted object of desire with outstanding guiding qualities in the very best sense. Take our word for it: The short blade makes it uniquely manoeuvrable and sensationally precise to control. So you can shape your beard and contours with millimetre precision. And perfectly express your individual style.



Ebony Wood

Article 10580086
 GTIN 4045284008973
 Blade 5/8", carbon, 1/1 full hollow, pointed spine (short), Spanish point
 Handle ebony wood



Olive Wood

Article 10580026
 GTIN 4045284008980
 Blade 5/8", carbon, 1/1 full hollow, pointed spine (short), square point, matt
 Handle olive wood



Tortoise Shell Imitation I

Article 10580356
 GTIN 4045284009017
 Blade 5/8", carbon, 1/1 full hollow, pointed spine (short), round point
 Handle tortoise shell imitation, with intasia



Tortoise Shell Imitation II

Article 105803513
 GTIN 4045284009000
 Blade 5/8", carbon, 1/1 full hollow, pointed spine (short), Spanish point
 Handle tortoise shell imitation, with intasia





5/8"

Article 125803810
 GTIN 4045284007426
 Blade 5/8", carbon, 1/1 full hollow,
 round spine, round point
 Handle PMMA acrylic, black



THE BEST QUALITY

YOU CAN AFFORD A SOPHISTICATED STANDARD

Do what you want. But do it right. And if you don't want to compromise on your shave or go for the absolute premium level... our Best Quality is literally in a class of its own. You don't have to sacrifice anything here. Because you're treating yourself to a genuine DOVO razor. Robust, straightforward, razor-sharp, finely ground by hand and perfect to handle with non-slip, riffled tang. A worthy representative of our family. And a perfect introduction for you to the world of DOVO wet shaving.

6/8"

Article 126803810
 GTIN 4045284007457
 Blade 6/8", carbon, 1/1 full hollow,
 round spine, round point
 Handle PMMA acrylic, black





THE PRIMA

THE NAME IS A MAJOR UNDERSTATEMENT

Honestly? We have no idea who came up with this understatement name. But what we do know is that this razor does a more than great job and stands for a thoroughly luxurious shaving experience. What does that mean for you? A razor-sharp, full-hollow carbon steel blade with subtle decoration. Silky shiny ebony handle. Lots of DOVO craftsmanship made in Solingen. And a darn good feeling at the end!

Horn

Article 12581194
 GTIN 4045284008928
 Blade 5/8", carbon, 1/1 full hollow, round spine, round point
 Handle bovine horn



Ebony Wood

Article 12581084
 GTIN 4045284007037
 Blade 5/8", carbon, 1/1 full hollow, round spine, round point
 Handle ebony wood



THE INOX

PURISTIC AND RUGGED

You want to treat yourself to a real DOVO razor, but don't want to bother less with maintenance? No problem. Because you alone decide what is best for you individually when shaving. We manufacture your DOVO INOX razor for you from pure, stainless steel. The elaborate full hollow grind is also done by hand in several stages. And the blade is refined with 24-carat gold. Like all DOVO knives, the INOX makes your shave a real experience. And it won't hold it against you if the gin and tonic afterwards is more important to you than the careful cleaning. alternative final sentence: ... and won't hold it against you if you otherwise simply leave it to the left.

Ebony Wood

Article 13581087
 GTIN 4045284007266
 Blade 5/8", stainless, 1/1 full hollow, round spine, round point
 Handle ebony wood



Olive Wood

Article 13581027
 GTIN 4045284007303
 Blade 5/8", stainless, 1/1 full hollow, round spine, round point
 Handle olive wood



The Wedge

Article 15381387
 GTIN 4045284007327
 Blade 3/8", stainless, flat ground, round spine, round point
 Handle PMMA acrylic, black





THE UNIQUE ONES

EVERYTHING. EXCEPT ORDINARY.

Individuality beyond the norm has always been part of our DNA. And yet even we have products that literally don't fit into any of the DOVO drawers. The unique ones. The ones that stand alone with their individual character. Like you, perhaps? The ones that are not so easy to describe. You simply have to experience them to learn to appreciate them. You want to get to know them better? Good decision. Because our unique ones live up to their name, not only in terms of make and design, but also in terms of the shaving experience.



Special

Article 12581358
 GTIN 4045284007815
 Blade 5/8", carbon, 1/1 full hollow, round spine, round point
 Handle tortoise shell imitation, with DOVO intarsia



Solingen

Article 12581319
 GTIN 4045284007365
 Blade 5/8", carbon, 1/1 full hollow, round spine, round point
 Handle mother of pearl imitation, with DOVO intarsia

Astrale

Article 12581085
 GTIN 4045284008997
 Blade 5/8", carbon, 1/1 full hollow, round spine, round point
 Handle ebony, with nickel/German silver plate inlay



Apex

Article 125810812
 GTIN 4045284007976
 Blade 5/8", carbon, 1/1 full hollow, round spine, square point
 Handle ebony wood



Diamant

Article 125820211
 GTIN 4045284008188
 Blade 5/8", carbon, 1/1 full hollow, round spine, round point, black anodized
 Handle olive wood



Special Razor Care Oil

Article 35010001
 GTIN 4045284010525
 Volume 10 ml

Details The DOVO Special Straight Razor Oil ensures that your favorite blade does not get rust corrosion. The oil prevents rust stains, especially after long periods of storage and storage at high levels of humidity. The oil is colorless and odorless, has a high aging and oxidation stability. It is not only used to clean your blade, but also provides strong protection against corrosion. Long live your razor!





LESS



IS MORE.

THE EDO

A CLASS OF ITS OWN

When closed, the EDO resembles the form of a closed flower bud. When opened, it resembles the fine lines of a luxury sports car with the simplicity of a Japanese Kamisori razor. The EDO defines a new design language. And yet its unique shape is a challenge even for the most experienced master grinders. Many of our processes had to be adapted to perfect the EDO. Perfection has its price: Due to the more complex manufacturing process, we can only produce a limited number per year.

Walnut

Article 1658009141
 GTIN 4045284009048
 Blade 5/8", carbon, 1/1 full hollow, pointed spine
 Handle walnut wood from Switzerland, ultra-compressed with patented technology



Maple

Article 1658009142
 GTIN 4045284009055
 Blade 5/8", carbon, 1/1 full hollow, pointed spine
 Handle maple wood from Switzerland, ultra-compressed with patented technology



Beech

Article 1658009143
 GTIN 4045284009062
 Blade 5/8", carbon, 1/1 full hollow, pointed spine
 Handle beech wood from Switzerland, ultra-compressed with patented technology



Spruce

Article 1658009145
 GTIN 4045284009086
 Blade 5/8", carbon, 1/1 full hollow, pointed spine
 Handle spruce wood from Switzerland, ultra-compressed with patented technology





FOR SOME OF US



**IT BECOMES A RELIGION
OVER TIME.**



LIMITED EDITION: FACHARBEIT

A RAZOR BLADE TREASURE. FORGED 50 YEARS AGO.

The byname "Gehobene Schätze" has a double meaning and translates to both "Lifted Treasures" and "Superior Treasures". Both is accurate. The razor blades were forged and partially finished in 1967. They were recently discovered in a storage room at our factory. Originally packaged, 50 years untouched, and with the original order and processing slips. Even our seasoned grinding masters became emotional at the discovery. Just as you will be at the sight of them. Every one of the limited 1.000 pieces (500 per color) is a superior treasure with engraved serial number.



Red

Article 136813315
 GTIN 4045284009093
 Blade 6/8", stainless, 1/1 full hollow,
 round spine, square point, serial
 number
 Handle PMMA acrylic, red



Blue

Article 136813415
 GTIN 4045284009109
 Blade 6/8", stainless, 1/1 full hollow,
 round spine, square point, serial
 number
 Handle PMMA acrylic, blue



SHAVETTE™

CHANGE THE BLADE. NOT YOUR EXPECTATIONS.

Wherever classic razors cannot be used for hygienic reasons, the interchangeable blade system of the Shavette razors is a worthy alternative. Handling during shaving is as usual. The performance is superb. Maintenance is trivial. And the hygiene benefits, especially for professional use by barbers, are obvious. Always stay nice and clean? It's easy with the Shavette. Thanks to its light weight and uncomplicated care, the Shavette is also your perfect travel companion.

34 WOOD

35 METAL AND POLYMER

36 ACCESSORIES



Olive Wood

Article 22142022
 GTIN 4045284010273
 Blade holder aluminium, black, matt
 Handle olive wood



Ebony Wood

Article 21140082
 GTIN 4045284010372
 Blade holder stainless steel, polished
 Handle ebony, with laser inlay DOVO Shavette, silver



Stainless Steel

Article 21130201
 GTIN 4045284009338
 Blade holder stainless steel, polished
 Handle stainless steel, satin-finished, with laser engraving DOVO Shavette



Aluminum

Article 22130201
 GTIN 4045284009390
 Blade holder aluminium, silver
 Handle stainless steel, satin-finished, with laser engraving DOVO Shavette



Black Polymer

Article 22130481
 GTIN 4045284009376
 Blade holder aluminium, silver
 Handle black polymer





Blade Holder Standard

Article 31450411
 GTIN 4045284009307
 Suitable standard 45mm double edge blades, all DOVO Shavette models

pack of 5

Article 31450412
 GTIN 4045284010532



Blade Holder Long

Article 31650481
 GTIN 4045284009314
 Suitable 65mm double edge blades, all DOVO Shavette models

pack of 5

Article 31650482
 GTIN 4045284010549



Blade Holder American

Article 31550451
 GTIN 4045284009321
 Suitable 55mm double edge blades, all DOVO Shavette models

pack of 5

Article 31550452
 GTIN 4045284010556



10 DE Blades, Made in Germany

Article 30451201
 GTIN 4045284010563
 Material stainless steel, PTFE enhanced
 Details The 10 razor blades have been ground to the finest perfection in Germany. 10 blades that hold their sharpness like no other.

pack of 100 (10 x 10)

Article 30451202
 GTIN 4045284013014





SAFETY RAZORS

PAMPER YOURSELF.

Creating wonderful moments out of the everyday. Transforming routine into anchor points of enjoyment. That is our goal. For many, shaving is an annoying side activity. Together we transform it into a meditative ritual that brings a moment of pleasure right at the start of the day.



PRIMO

DECADES OF EXPERIENCE CONDENSED INTO A SHAVING MASTERPIECE.

The name PRIMO translates to "at first". PRIMO marks a new beginning. A new beginning for you, the wet shaver. More than a century worth of knowledge, condensed into 2 years of development, with a painful amount of development cycles, gave birth to this unparalleled shaving tool. In wet shaving, a miniscule difference in the geometry of the razor has a fundamental influence on your shaving experience. We aimed for the most intensely satisfying shaving experience possible. And, to the regret of all other safety razors, we were successful. Bliss is with those who make PRIMO the integral part of their grooming routine. A meditative state that is unrivalled.



PRIMO I

Article 7000 0001
 GTIN 4045284009123
 Material Head: zinc die casting
 Handle: brass
 Both coated in chrome, glossy



PRIMO II

Article 7000 0002
 GTIN 4045284009130
 Material Head: zinc die casting
 Handle: brass
 Both coated in chrome, glossy



SHAVING ACCESSO- RIES

THE WORLD'S SIMPLEST LITTLE PLEASURES

The best razor is only as good as the attention to detail in all the other things that go into shaving. Sounds logical? But unfortunately it is not self-evident. Except with us. Because DOVO is DOVO and we can't help it but to do it well. Perfect brush, stylish bowl, the right strop ... we got you covered!

44 BRUSHES

46 STROPS

48 SOAP AND AFTERSHAVE

44 THE DOVO SHAVE RITUAL



Ebony Wood Badger

Article 33002081
GTIN 4045284010389
Material fine badger, ebony wood handle



Ebony Wood Fibre®

Article 33002081
GTIN 4045284010389
Material Fibre® silvertip synthetic, ebony wood handle



Olive Wood Badger

Article 33001021
GTIN 4045284010136
Material pure badger, olive wood handle



Creme

Article 33001311
GTIN 4045284010198
Material pure badger, creme acrylic



Black

Article 33001381
GTIN 4045284009598
Material pure badger, black acrylic

Olive Wood Shaving Bowl

Article 34090021
GTIN 4045284010501
Material olive wood
Size 9 cm



Olive Wood Bowl + Lid

Article 34091021
GTIN 4045284010846
Material olive wood
Size 9 cm



SOFT

SOFTER



KEEPING YOUR RAZOR SHARP

HAPPY KNIFE, HAPPY LIFE

Before you start shaving, strop your razor. To do this, first run your hand over the leather belt to remove dust and dirt. Now place the back and edge of your razor gently on the tightly stretched strop and pull the blade towards the back of the blade without exerting too much pressure. Don't forget to keep the strop under tension at all times. Otherwise you could damage the razor's edge.

When you have reached the end of the strop with the back of the blade, turn the razor over the back and repeat the procedure on the other side of the blade.

After 10-15 »rounds« up and down, your razor is ready for the next smooth shave.

TAKING CARE OF THE STROP

To ensure that your leather strop can do its job properly and for a long time, you should also pay some attention to its care.

Always keep your belt clean and free of foreign objects. Even small particles of dirt can deform the narrow edge of your razor and damage it. You can massage a care product into the leather with the palm of your hand at regular intervals. This will protect it from drying out and preserve its natural flexibility.

Please do not store your strop in humid environments, such as your bathroom or in direct sunlight.



Razor Strop

Article 32450112
GTIN 4045284009178
Material finest bovine leather
Size 45 mm



Razor Strop Wide

Article 32780114
GTIN 4045284009185
Material finest bovine leather
Size 78 mm



Tension Screw Strop

Article 32450113
GTIN 4045284010365
Material finest bovine leather
Size 45 mm



Leather Balm

Article 35050102
GTIN 4045284010167
Usage leather balm for all leather strops, keeps the leather smooth
Size 50 ml



SOAP AND AFTERSHAVE

ARIANA & EVANS IS JOINING FORCES WITH DOVO

Put an end to your face's insatiable desire for perfection! Here comes the really good stuff. For your razor and for your skin.

What do you do when there is no such thing as the perfect shaving foam or the ideal aftershave? One thing is clear: you look for someone who shares your aspirations and really knows what they're doing. At least that's what we did. And after what felt like an endless journey, we finally found our absolute dream team in ARIANA & EVANS.

The result of this collaboration? A shaving foam with the ideal moisture balance for your skin and sensational stability so that your blade can glide over the skin as smooth as butter. A matching aftershave with an exclusive formula and the best ingredients that give your skin everything it deserves after a wet shave. Both products are available in three unique DOVO Good Vibe variants: »Citrus Lion«, »Berlin Barber« and »Deep Leather«.

Citrus Lion



Berlin Barber



Deep Leather



Citrus Lion Soap

Article	51102201
GTIN	4045284010778
Package	intense handmade soap, stoneware shaving soap bowl and cork lid handcrafted in Portugal
Size	115 g
What is inside	Stearic Acid, Aqua, Garcinia Indica Seed Butter, Butyrospermum Parkii (Shea) Butter, (Vegetable) Glycerin, Potassium Hydroxide, Ricinus Communis Seed Oil, Rice Milk Nat, Sodium Hydroxide, Helianthus Annuus (Sunflower) Seed Oil, Hydrogenated Palm Oil, Persea Gratissima (Avocado) Oil, Theobroma Cacao Seed Butter, Simmondsia Chinensis (Jojoba) Seed Oil, Cocos Nucifera (Coconut Milk) Fruit Juice, Sodium Lactate, Cocos Nucifera Oil, Beer, Colloidal Oatmeal, Agave Americana Leaf Extract, Aloe Barbadensis Leaf Juice, Perfume, Xanthan Gum, Hyaluronic Acid, Ulmus Fulva (Slippery Elm) Bark Extract

Berlin Barber Soap

Article	51102202
GTIN	4045284010785
Package	intense handmade soap, stoneware shaving soap bowl and cork lid handcrafted in Portugal
Size	115 g
What is inside	Stearic Acid, Aqua, Garcinia Indica Seed Butter, Butyrospermum Parkii (Shea) Butter, (Vegetable) Glycerin, Potassium Hydroxide, Ricinus Communis Seed Oil, Rice Milk Nat, Sodium Hydroxide, Helianthus Annuus (Sunflower) Seed Oil, Hydrogenated Palm Oil, Persea Gratissima (Avocado) Oil, Theobroma Cacao Seed Butter, Simmondsia Chinensis (Jojoba) Seed Oil, Cocos Nucifera (Coconut Milk) Fruit Juice, Sodium Lactate, Cocos Nucifera Oil, Beer, Colloidal Oatmeal, Agave Americana Leaf Extract, Aloe Barbadensis Leaf Juice, Perfume, Xanthan Gum, Hyaluronic Acid, Ulmus Fulva (Slippery Elm) Bark Extract

Deep Leather Soap

Article	51102203
GTIN	4045284010792
Package	intense handmade soap, stoneware shaving soap bowl and cork lid handcrafted in Portugal
Size	115 g
What is inside	Stearic Acid, Tallow, Aqua, Caprae Lac (Goats Milk), Potassium Hydroxide, Garcinia Indica Seed Butter, Butyrospermum Parkii (Shea) Butter, Beer, Ricinus Communis Seed Oil, Sodium Hydroxide, (Vegetable) Glycerin, Butter, Aloe Barbadensis Leaf Juice, Persea Gratissima (Avocado) Oil, Prunus Armeniaca (Apricot) Kernel Oil, Perfume, Sorbitol, Lanolin, Simmondsia Chinensis (Jojoba) Seed Oil, Agave Americana Leaf Extract, Sodium Lactate, Xanthan Gum, Dromiceius (Emu) Oil, Hyaluronic Acid, Colloidal Oatmeal, Ulmus Fulva (Slippery Elm) Bark Extract, Hydrolyzed Silk, Yogurt, Silk Amino Acids, Althaea Officinalis (Marshmallow) Root Extract



Citrus Lion Aftershave

Article	52083301
GTIN	4045284010747
Package	intense handcrafted aftershave, matt bottle with wooden lid
Size	80 ml
What is inside	Aloe Barbadensis Leaf Juice, Alcohol Denat., (Vegetable) Glycerin, Rosa Gallica Flower Water, Calendula Officinalis Extract, Trifolium Pratense Flower Extract, Chamomilla Recutita Flower Extract, Plantago Lanceolata Leaf Extract, Salix Alba Bark Extract, Perfume, Tocopherol (Vitamin E), Caprylic/Capric Triglyceride

Berlin Barber Aftershave

Article	52083302
GTIN	4045284010754
Package	intense handcrafted aftershave, matt bottle with wooden lid
Size	80 ml
What is inside	Aloe Barbadensis Leaf Juice, Alcohol Denat., (Vegetable) Glycerin, Rosa Gallica Flower Water, Calendula Officinalis Extract, Trifolium Pratense Flower Extract, Chamomilla Recutita Flower Extract, Plantago Lanceolata Leaf Extract, Salix Alba Bark Extract, Perfume, Tocopherol (Vitamin E), Caprylic/Capric Triglyceride

Deep Leather Aftershave

Article	52083303
GTIN	4045284010761
Package	intense handcrafted aftershave, matt bottle with wooden lid
Size	80 ml
What is inside	Aloe Barbadensis Leaf Juice, Alcohol Denat., (Vegetable) Glycerin, Rosa Gallica Flower Water, Calendula Officinalis Extract, Trifolium Pratense Flower Extract, Chamomilla Recutita Flower Extract, Plantago Lanceolata Leaf Extract, Salix Alba Bark Extract, Perfume, Tocopherol (Vitamin E), Caprylic/Capric Triglyceride



THE DOVO SHAVE RITUAL

FINEST STONEWARE FOR YOUR MOMENT OF CALM



In many cultures, the regular shave is still an important social ritual. At the barber shop you exchange news, gossip, see familiar faces, and relax. You go to the barber differently than you leave him. With less hair, but with more news and a confident and relaxed feeling. Freshly shaved, you feel invincible, resistant to the greatest stress.

That distinct feeling you have after a visit at the barber shop is now available in your own bathroom. Our Shave Ritual was developed together with the Potsdam designer Carsten Gollnick. The set embodies the relaxed attitude and confident demeanor you see in men when they leave their barber. The clean edges of each ceramic piece reflect the clean edges of the beard after a professional trim.

At the same time, the set is reminiscent of valuable utensils for a tea ceremony. Here, too, the ritual is in the main act. Details matter. You are in a parallel world and mentally ignore everything else. The result is wonderful, but it becomes something very special thanks to the preceding ritual.

We implemented the ambitious design with a partner on the Portuguese west coast. Both their quality and craftsmanship are excellent. Innovative design needs partners who can bring it to life.

We offer the set in 2 surfaces: »Daylight« and »Pitch Dark«. While "Daylight" is dressed in a velvety, shiny white with dark inclusions, "Pitch Dark" combines a deep, matt black with small, subtly shiny spots.

Now imagine: You get up on Sunday morning, you have slept well and you have time. Time for yourself. There is a lot going on during the week, your head and mind are constantly working. The weekend is vacation, even if it's only for 2 days. Use it. Treat yourself to a mini vacation. Give yourself the radiance that a barber gives you. In your own home.

Side note: the set looks especially beautiful with our new EDO straight razors. Both have a very similar design language. Not surprising, since they both are brain children of Carsten Gollnick.



Shave Ritual – Daylight

Article 6340512

GTIN 4045284010853

Materials Tablar, Bowl, Lid: fine stoneware, handmade in Portugal
Razor tray: Smoked Oak, handmade in Portugal

Size Tablar: 25,3 x 14,6 x 2,0 cm
L x W x H Bowl: 14,6 x 11,8 x 5,9 cm
Lid: 12,2 x 12,2 x 2,9 cm
Razor tray: 10,1 x 4,3 x 1,5 cm

Note All products in the set are handmade and handglazed. Thus, there are slight deviations in the dimensions and surfaces. This gives the whole thing soul.



Shave Ritual – Pitch Dark

Article 6340582

GTIN 4045284010860

Materials Tablar, Bowl, Lid: fine stoneware, handmade in Portugal
Razor tray: Smoked Oak, handmade in Portugal

Size Tablar: 25,3 x 14,6 x 2,0 cm
L x W x H Bowl: 14,6 x 11,8 x 5,9 cm
Lid: 12,2 x 12,2 x 2,9 cm
Razor tray: 10,1 x 4,3 x 1,5 cm

Note All products in the set are handmade and handglazed. Thus, there are slight deviations in the dimensions and surfaces. This gives the whole thing soul.



HARDWARE FOR HAIR AND BODY CARE

YOUR HAIR, HANDS AND FEET
ALSO DESERVE HANDMADE
PRECISION

Nail scissors, clippers, tweezers, files ... DOVO also makes a big splash with all the small, seemingly inconspicuous everyday helpers. Time and again we meet astonished faces when we tell them how much experience and manual work goes into perfect DOVO nail scissors or other products in this category. But just believe us when we say: every single step of it is worth it. Because it says DOVO on it. And that is a direct promise from our brand.

54 STAINLESS STEEL TOOLS

56 BRUSHES AND COMBS



Beard Scissors

Article 41453201
 GTIN 4045284006580
 Material stainless steel, satin-finished,
 one side serrated
 Size 4½ inch



Hair Scissors

Article 41603202
 GTIN 4045284001592
 Material stainless steel, satin-finished,
 one side serrated
 Size 6 inch



Cuticle Scissors

Article 41351204
 GTIN 4045284004838
 Material stainless steel, satin-finished
 Size 3½ inch



Nail Scissors

Article 41353204
 GTIN 4045284004852
 Material stainless steel, satin-finished,
 one side serrated
 Size 3½ inch



Klipette

Article 41251203
 GTIN 4045284009437
 Material stainless steel, satin-finished
 Size 2½ inch

Nail Clipper Small

Article 44060201
 GTIN 4045284016831
 Material stainless steel, satin-finished
 Size 6 cm



Nail Clipper Large

Article 44080201
 GTIN 4045284016855
 Material stainless steel, satin-finished
 Size 8 cm



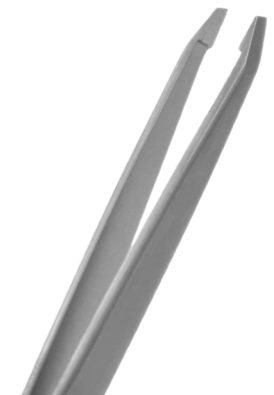
Nail File

Article 45352201
 GTIN 4045284015834
 Material stainless steel, satin-finished,
 tripple-cut
 Size 3½ inch



Tweezers

Article 46351201
 GTIN 4045284016763
 Material stainless steel, satin-finished,
 slanted tip
 Size 3¾ inch





Beard Brush with Handle

Article 42131061
 GTIN 4045284010433
 Material pear wood and boar bristles
 Size 13,5 cm



Beard Brush Oval

Article 42091062
 GTIN 4045284010440
 Material pear wood and boar bristles
 Size 9 cm



Beard Comb + Brush

Article 43110361
 GTIN 4045284010204
 Material brown acrylic and boar bristles
 Size 11,5 cm

Our beard brushes are handmade with the finest wood from sustainable, regional forestry in Germany by our partners at KOSTKAMM.

As bristles we use hard wild boar bristles. These are sorted into different categories by specialists. The bristles we choose are extremely robust and thus guarantee a long life for the brush.

With the brush you not only remove impurities such as dead skin from the beard, but also massage the facial skin at the same time. This improves the skin's blood supply, supporting beard growth and improving the complexion.



Pocket Comb Fine

Article 43100193
 GTIN 4045284010471
 Material bovine horn, handmade in Germany
 Size 10 cm with 1,2 mm tooth spacing



Pocket Comb Medium

Article 43130194
 GTIN 4045284010488
 Material bovine horn, handmade in Germany
 Size 13 cm with 1,6 mm & 0,8 mm tooth spacing



For many decades, the wealth of experience in comb production has been passed on by our German production partner Thohr. Working with natural materials requires an incredible amount of skill and expertise.

For our horn combs, cattle horns are first softened with steam, then cut open, bent open and compressed. The horn plates have to dry out for months in this compressed state in order to keep their new structure. If you shorten the process, the combs will deform again over time.

Our comb teeth are painstakingly polished after cutting. This is tedious, but prevents hair from being damaged by rough edges.

This is how our handcrafted masterpieces are made in over 20 work steps and with a great deal of finesse. Your hair notices the difference. A nice side effect of horn combs: they don't build up static. So you don't look like you just got into the socket.



SETS AND ETUIS

THESE REALLY ARE SOMTHING.
AS A GIFT OR FOR YOURSELF.

If you shave yourself in style, you have your life under control. And also like to have things perfectly in place. At home or on the road. Do you feel the same way? Then our carefully put together sets and high-quality cases are definitely something that speaks to your heart. And maybe just the gift idea you've been searching for so long. You don't know who you could give a present to? Look in the mirror. An idea will surely come to you.



**Set 1**

Article 6420187
 GTIN 4045284027677
 Material black bovine leather, stainless steel, handmade in Germany
 Package 43250201 Klipette
 44060201 Nail clipper, small

**Set 2**

Article 6420188
 GTIN 4045284027684
 Material black bovine leather, stainless steel, handmade in Germany
 Package 41451201 beard scissors, corrugated
 43100193 small pocket comb

**Set 3**

Article 6430184
 GTIN 4045284027639
 Material black bovine leather, stainless steel, handmade in Germany
 Package 41353204 Nail scissors, corrugated
 45352201 Nail file, small
 46351201 Tweezers, slant tip

Set 4

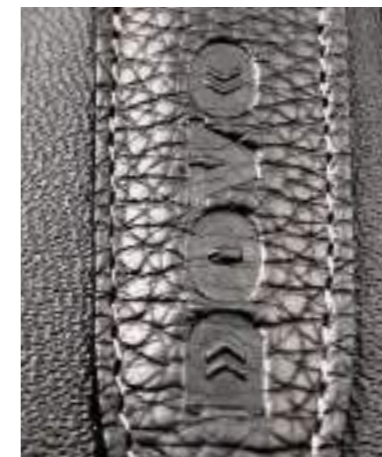
Article 6440185
 GTIN 4045284027646
 Material black bovine leather, stainless steel, handmade in Germany
 Package 41251203 Klipette
 44060201 Nail clipper, small
 45352201 Nail file, small
 46351201 Tweezers, slant tip

**Set 5**

Article 6440186
 GTIN 4045284027653
 Material black bovine leather, stainless steel, handmade in Germany
 Package 41351205 Cuticle scissors
 41353204 Nail scissors, corrugated
 45352201 Nail file, small
 46351201 Tweezers, slant tip

**Set 6**

Article 6260182
 GTIN 4045284027660
 Material black bovine leather, stainless steel, handmade in Germany
 Package 21130201 SHAVETTE Stainless
 41251203 Klipette
 41453201 Beard scissors, corrugated
 41353204 Nail scissors, corrugated
 43100193 small pocket comb
 46351201 Tweezers, slant tip





Beard Scissors Etui

Article 6420181
 GTIN 4045284026205
 Material black bovine leather
 Package Leather Etui
 41451201 Beard Scissors
 43110361 Beard Comb + Brush

Straight Razor Etui

Article 6100181
 GTIN 4045284024423
 Material black bovine leather
 Usage All DOVO straight razors below
 7/8"



Klipette Etui

Article 6420182
 GTIN 4045284009888
 Material black bovine leather
 Package Leather Etui
 43250201 Klipette
 Cleaning Brush

Straight Razor Etui Prime

Article 6100181
 GTIN 4045284024423
 Material black bovine leather
 Usage All DOVO straight razors below
 7/8"



Our leather cases have been manufactured by our partners in Solingen for over 50 years. The highest quality materials are handcrafted into unique pieces with the highest level of craftsmanship. Selecting the right types and layers of leather for the respective application requires a great deal of knowledge. The wrong tanning agent quickly leads to problems with the carbon steel of our straight razors. As with all natural raw materials, the processing itself requires a lot of patience.



Safety Razor Etui

Article 6000181
 GTIN 4045284009895
 Material black bovine leather
 Usage For MERKUR Futur Safety Razor
 and similar models





OEM POSSIBILITIES

NO ONE CAN DO IT LIKE DOVO.
USE THIS FOR YOUR OWN BRAND.

For selected partners, we offer the possibility to sell DOVO quality as an OEM version under their own brand.

OEM STRAIGHT RAZORS

YOUR BRAND DESERVES ONLY THE SHARPEST THINGS. OUR RAZORS ARE A GUARANTEED ENVY FACTOR IN THE MARKET.

You want to have the best straight razors, with your own branding? Say no more! We have been designing and manufacturing straight razors for selected partners for decades. Major brands trust our unsurpassed experience and obsession for perfection. Your brand can be next.

Write us a quick message to info@dovo.com and let us know how we can upgrade your brand's product range with the pinnacle of knife making – straight razors.

Your brand deserves the best. Be deliver the best. A match made in Solingen.



OEM SAFETY RAZORS

A HUGE MARKET. PROVIDED YOU DO IT RIGHT. WE SUPPORT YOU WITH THIS. WITH MADE IN GERMANY QUALITY AND EXECUTION.

Men's cosmetics and grooming is still the largest growth area in the personal hygiene space. Nothing seems to stop this trend.

At the same time, customers place increasing value on local production, ethical manufacturing processes, economical use of raw materials and minimization of waste through the longest possible product life cycle. Our products meet all of those preferences.

In the shaving space, the most popular system razors create an incredible amount of waste in composite materials which are difficult to recycle. The consumer is shifting to better alternatives. You can too.

We are able to offer you and your brand OEM versions of safety razors. While straight razors might be too fringe for some people, safety razors are rapidly gaining popularity with both women and men. They are easy to use, softer on the skin than system razors, create minimal waste, and go easy on your wallet.

For selected partners, we offer custom OEM safety razors. Write us a quick message to info@dovo.com and let us know how we can upgrade your brand's product range. If you love your customers, let them enjoy all-round superior shaves. They will love you back.



SHARP



SHARPER



THE DOVO CREW. LOOKING SHARP IN 1907, ONE YEAR AFTER ENTRY IN THE COMMERCIAL REGISTER OF SOLINGEN.



HISTORY AND OTHER TOPICS

EXCITING FACTS ABOUT THE HISTORY OF WET SHAVING AND WHAT ACTUALLY DISTINGUISHES RAZORS

We can tell you a lot about shaving. And we're happy to do so. For example, how it all began, which methods people used in the past that sound absurd today, and when someone finally realised that it all works much better wet. At least as exciting, however, is the question of what different types of design and detail variations there are in razors... or the answers to the question of what influence individual factors have on the razor and its performance.

72 THE HISTORY OF WET SHAVINGy

74 THE MANY FACES OF STRAIGHT RAZORS

THE HISTORY OF WET SHAVING

THE ROCKY ROAD FROM SHARK TEETH TO THE CURRENT WET SHAVING UNIVERSE



Bronze razor. Italy, 9th/8th century B. C. (Deutsches Klingemuseum Solingen)



Bronze razor. Northeastern Europe, 10th/11th century A. D.



Copper razor. Egypt, 15th century A. D.

Even though men have been shaving their faces with blades for thousands of years, the straight razor is more modern than ever. It can look back on a longer development history than almost all objects that you encounter in everyday life.

We will now take a closer look at how this endless evolution produced the perfect shaving tool. To understand why razors have existed for over 5,000 years, we need to take a look behind the scenes of world history. Let's start from the beginning.

SHARK TEETH AND COBWEBS

Archaeological finds prove that men always took care of their facial hair.

Men in the early years had to resort to sharp shells and shark teeth. Very masculine. Sharp tools made of flint or obsidian were also used to scrape off the hair.

3,000 years ago in the Bronze Age, the first metal razors were used for shaving. The style-conscious Egyptian used ax-like razor made of copper or gold to fight their facial hair.

Shaving was also common in ancient Rome. The first shave of a young man was considered a religious ritual of growing up. At that time, the barber profession already existed. In Pompeii, there were elaborately decorated folding razors, which were probably created as precious family heirlooms. Back then shaving injuries were treated with cobwebs. This sounds strange at first, but is actually being studied again in modern medicine.

MONKS AND LOUIS XIV

In the Middle Ages, the members of the clergy were very interested in shaving their hair and beard. Most of the popes even shaved their beard completely. Back then, the pilgrims would have been bad customers for us: They didn't shave at all or cared about their hair and nails.

In the early modern period, razor production was already at a very high level. The blades were wedge-shaped, broad at the tip and tapered towards the tang. When fashion god Louis XIV shaved, people even



spoke of the demise of the beard in the West. The invention of the hard and pure cast steel made razors so user-friendly that self-shaving became very popular again.

PERFECTION

With the invention of Silver Steel, the 19th century goes down in history as the golden era of the straight razor. Blades from Sheffield and Solingen were particularly in demand. The first hollow grinds can be seen by 1825 and the shape of the razors was very similar to what you can still buy today. Towards the end of the 19th century, straight razor production was largely industrialized and was no longer purely manual.

The beginning of the 20th century was an absolute key date for us in Solingen because the company DOVO was founded in 1906.

Sadly, the First World War was responsible for the fact that shaving was not only fashionable but even essential for survival at that time. So that the soldiers could survive the gruesome gas attacks in the trench warfare, it was essential to guarantee the secure fit of the gas mask with a shaved face. For this reason safety razors became very popular among the population. Straight razors with interchangeable blades, similar to our Shavette, were now on the market.

The use of straight razors at barbershops tended to decrease. On the one hand, gentleman's hairdressers were no longer as widespread in the following decades as before, and on the other hand, the straight razor no longer corresponded to the zeitgeist in terms of hygiene. In barbershops, it was common for several men to be shaved with the same straight razor, which is not ideal from today's perspective on hygiene.

The invention of the dry shaver and the cartridge razor also had a very negative effect.

QUO VADIS?

Especially in recent years, the straight razor gained in popularity again: A well-groomed beard is being welcomed today and also makes many women's hearts beat faster. Anchoring the beard in fashion goes hand in hand with the return of the barber trade. Not much compares to having a skilled barber giving you a proper shave and feeling your soft, well-shaved skin afterwards. More and more people are keen to discover traditional crafts again. No matter if it is a classic car, vintage watch or the millennia-old art of shaving with a straight razor.

One fact holds true since the dawn of shaving: Straight razors still offer the most thorough shave to this day. No other form of shaving removes your facial hair as gently and thoroughly while being gentle to your skin. As a bearded man, a straight razor still gives you the most accurate shave and beard lines.

After several thousand years of development, the straight razor is still the most perfect and essential tool for your beard. Now it is your time to carry on a man's most beautiful tradition.

THE MANY FACES OF STRAIGHT RAZORS

GET TO KNOW THE DIFFERENCES

At first glance, all razors look similar. But if you look more closely and, above all, feel them, you will quickly realise that each razor has its own individual character.

THE MATERIAL

Originally, razors were made purely of carbon steel, but with advances in material technology, other metal alloys, such as stainless steel, have also found their way into classic wetshaving.

CARBON STEEL

Razors made of carbon steel are known for their gentle shaving properties. The steel's good edge retention is achieved by heating it to around 1,000 degrees and then quenching it in an oil bath. Knives made of this steel achieve a Rockwell hardness of up to 61 HRC.

However, carbon steel is not stainless, so you should follow the care instructions so that you can enjoy your razor for a long time.

STAINLESS STEEL

Our stainless steel knives are forged from rust- and acid-resistant steel. This modern alloy is characterised by good edge retention and sharpness. The advantage for you is that the knives are very low-maintenance and easy to care for - so you don't have to worry about rust or oxidation.

THE BLADE WIDTH

The blade width is traditionally given in inches. In practice, razors with widths between 3/8 and 6/8 inches have become established. Each size has its individual advantages and you should consider your personal preferences when deciding what to buy.

3/8 INCH



Narrow razors, such as the DOVO INOX 3/8 Zoll, show their strengths especially in narrow facial areas such as around the nose, ears or eyebrows. A narrow razor is the easiest to use and manoeuvre for these fine shaving tasks. A 3/8 inch razor is less suitable for a complete shave and should mainly be used by experienced users.

5/8 INCH



Straight razors with a width of 5/8 inch are true all-rounders and, thanks to their extensive range of tasks, are most common in the world of classic wet shaving. Not only experienced shavers like to use this width, we also always advise beginners to use blades in this size, such as the DOVO BARBAROSSA or ASTRALE. They manage the balancing act between exact trimming of contours on the one hand and a smooth shave on the other with ease. The reasonably high weight also allows the razor to glide effortlessly over your face.

6/8 INCH



A razor in 6/8 inch is best for working on very strong beard growth. Due to the heavy weight of the blade, it glides smoothly and quietly over your skin without any effort. The BERGISCHE LÖWE is a good entry into this razor size. Just give it a try.

THE GRIND

To form a high-quality razor, a steel blank is ground and sharpened several times by hand. There are different types of grind that define the characteristics of a blade.



WEDGE

Razors with a wedge shape are often called hatchets. Such rough blades, like the DOVO INOX 3/8 Inch, are rigid and torsionally stiff. You often find this shape on narrow razors to enable very precise shaving. The first razors were only ground as wedges, because with the technical possibilities of that time an exact hollow grind was not yet feasible. Nowadays, this cut is rarely used for facial shaving. However, it offers advantages in combination with a narrow razor for fine shaving.

HALF HOLLOW

Half-hollow blades show themselves to be much more flexible than coarse blades and swing easily in use. However, they are not as flexible as a razor blade with a full-hollow cut. Some razors prefer these blades because they offer a compromise between flexibility and rigidity. DOVO does not currently have any semi-hollow blades in its portfolio. We only make full-hollow and coarse blades. We don't do things halfway.

FULL HOLLOW

Most razors today are made with a full hollow grind. To achieve a full hollow grind, our most experienced razor grinders have to go through up to 15 operations several times. The flexible blade adapts best to skin irregularities and is therefore not only popular among beginners. The full hollow blade ensures a particularly close and comfortable shave. It also gives the user clear feedback during shaving and delivers a characteristic sound.

THE HEAD SHAPE

During the long history of razors, people have not only experimented with grinds and blade materials - different styles have also developed and proven themselves in the shape of the point/tip.

SQUARE POINT



The square head is very popular with advanced and professional users. It allows very precise shaving and trimming of contours, but it should be used with caution - the sharp tip carries a certain risk of injury. If you want to try a razor with this point shape, the DOVO APEX is a good place to start!

ROUND POINT



The round point is the most popular point shape for classic razors today. Knives like the DOVO BISMARCK are well suited for all applications and the rounded head reduces the risk of injury during use. As a beginner, you should rather use this head shape and practise the basics of wet shaving with it before moving on to specialised knives.

FRENCH POINT



The French point is a good compromise between the round and the straight head. With this point shape, you can trim contours beautifully and shave thoroughly without risking too much injury. If you are looking for a razor in this style, take a closer look at the DOVO INOX 3/8 inch.

SPANISH POINT



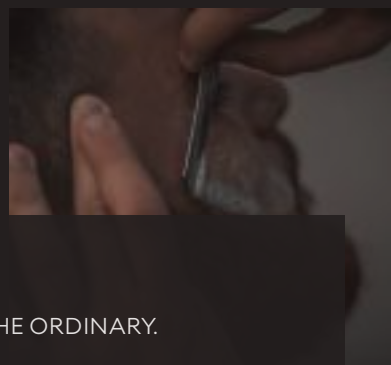
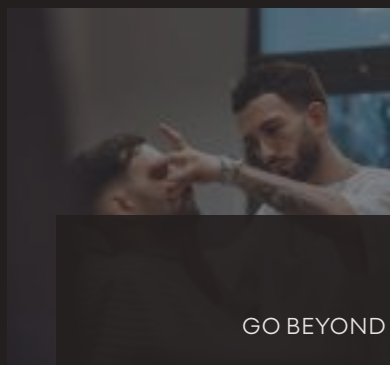
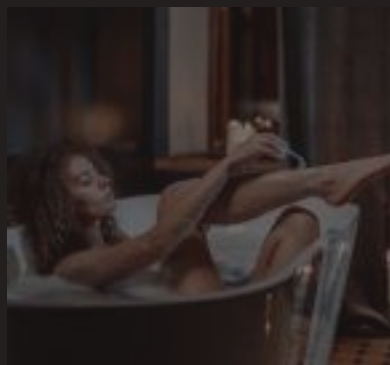
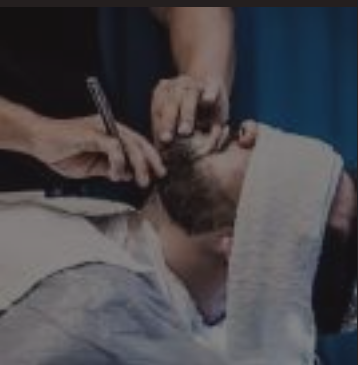
The Spanish point consists of an acute angle that changes into a concave shape at the cutting edge. We have designed two of our DOVO BARBAROSSA and the BERGISCHE LÖWE with this head shape so that you can also take care of your contours during the classic wet shave without having to forego a minimum of safety.

SHARP



SHARPER





GO BEYOND THE ORDINARY.
WELCOME TO THE WORLD OF DOVO.

